

QualiTrak™

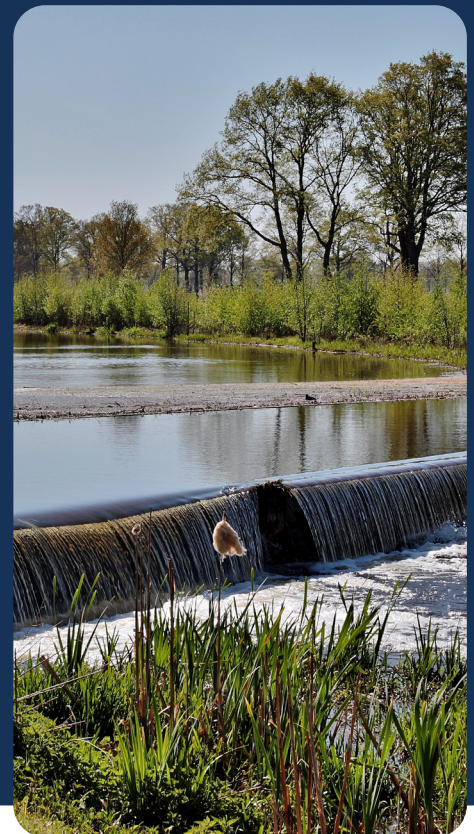
Monitoring a single parameter every 5 minutes, produces more than 100,000 data points per year. When multiple parameters must be monitored and managed to ensure product quality, adherence to organisational objectives and regulatory compliance, as is the case in water and wastewater processing, food and beverage production, recreational water management and many other industries and applications, the volume of data can very quickly become overwhelming. Sifting through vast spreadsheets and crowded SCADA traces, to assess compliance with an organisations or regulators targets, is time consuming, resource heavy and error prone.

QualiTrak™ is a standard feature of Information Engine™, developed by water quality experts at D2K Information. It generates a tabular report, comparing the selected data, on a per-hazard group (biological, chemical, physical, and radiological) basis against defined risk end points (such as health, asset protection).

The customisable output is a clear summary of the performance of the monitored data, against the threshold limits being used as reference criteria. Threshold limits may be regulatory or operational limits, and multiple lists are supported. Numerical data points, unique to the specific performance tracking and reporting needs of your organisation, are available for analysis.

Know in seconds how the facility has performed in the selected period, and how the performance compares to the previous period.

Annotate the report to provide further context, insights incorporating your domain knowledge and recommendations for improvement actions.



Information Engine™ (IE) is a customisable advanced water management analytics and visualisation software platform. IE converts data derived from field sensors into user-relevant information enabling users to make informed water quality management decisions

Flexible Output Reporting for smarter insights



Snapshot Report

Snapshot tabular report, comparing the selected data, on a per-hazard group (biological, chemical, physical and radiological) basis against defined risk end points (such as health, asset protection).

Advanced Report

Advanced report, incorporating the elements of the Snapshot report as well as trend and distribution plots, and detailed statistics for each parameter. The Advanced report also allows the addition of free text annotations in the finished report, providing the ability to add insights and context as required.

